



***CENTRON***

***AccuMix***<sup>™</sup> **CM760**

DATA COLLECTION MIXER

**Centron**

Smart Solutions for Smarter Bloodbanking



**Redefining the standards**

# *AccuMix*<sup>™</sup> CM760

## DATA COLLECTION MIXER

### ■ Features

- Accurate weighing and mixing of collected blood
- 5-inch LCD screen with user-friendly interface
- Visual/audible alarms with voice guide
- Multi-functional remote control unit
- Dual barcode scanner system
- Wireless data transfer (CDM software)
- Emergency onboard battery
- Large capacity battery pack for portable use
- *SureSeal*<sup>™</sup> tube sealer integration ready
- Secured stackable storage - Carrying Case Pro
- Versatile configuration

**Multi-functional remote control unit**

- shows % indication of collection progress
- Main panel buttons are located
- Easy access, no more hunching up the back

**Dual barcode scanner system**

- recognizes all standard barcode labels including ISBT128 (Customization available)
- Secondary scanner at the front of unit

**Sealing hand unit**

- SureSeal™ tube sealer module can be integrated

**5-inch large LCD**

- Clear backlight screen
- User-friendly graphic interface

**State-of-the-art technology**

- Precise weighing and mixing accuracy
- Customizable operational parameters
- Ergonomic design

**Standard large tray**

- supports all types of bloodbag in the market
- Easy to clean, easy to handle

**Sample tube holders**

- hold up to 6 sample tubes

**Carrying Case Pro**

- Robust stackable case
- Batteries can be recharged with the case closed
- "Carry & Set up" as collection stand

**Emergency onboard battery**

- guarantees completing ongoing collection for 30 more minutes in case of abrupt AC failure

**Intelligent voice guide (Multiple languages)**

- announces collection progress and alarms

**Internal device memory**

- saves up to 1,000 donor data, each consists of 30 information fields

**USB memory stick**

- Data can be moved via USB memory stick

**Wireless data transfer (CDM Software)**

- Simple / reliable / secured data communication with up to 18 devices by one CDM software intalled PC
- General spreadsheet file format (.csv) & .txt for system integration
- Simultaneous setting change available for all devices in network

\* shown in full configuration (CM760 Expansion)

# One for All, All for One

## Multi-functional Remote Control Unit

- 10 LED lamps indicate % progress of collection and alarms. The lamps flash in case of alarming.
- Main operation buttons (CLAMP/START/END/ENTER) on the unit enhance user convenience.
- Secondary barcode scanner is equipped at the front.



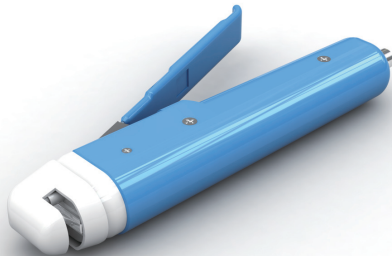
## Dual Barcode Scanner System

- Barcode scanners read most of standard barcode labels including blood bank-specified ISBT128 code.
- Centron R&D Lab is ready for customized solutions.



## SureSeal™ Tube Sealer Integration

- SureSeal™ tube sealer module can be installed in the main unit. By plugging in a sealing hand unit, CM760 is ready to offer the highest level of versatility.



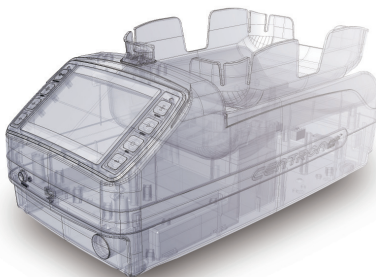
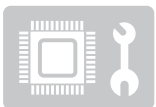
## Dual Battery System

- Onboard battery (rechargeable) is for emergency backup. In case of unexpected AC power failure, it guarantees saving all donor data and supplies power for 30 more minutes to complete ongoing collection cycle. No need to use BN128 battery pack all the time in case of AC powered indoor uses.
- For portable or outdoor use, the large capacity BN128 battery pack (rechargeable & replaceable) is available. The pack supports up to 8 hours of operation without AC mains.
- BN128 battery pack is charged through the main unit or BC164 fast battery charger.



## High User Customizability

- CM760 is designed to satisfy various operating conditions in professional demands. Users can adjust most operational setting including target collection volumes, alarm levels and on/off, tray moving speed and even specific gravity of blood.
- Centron R&D Lab offers customization support to meet your specific operation requirements.



## Intelligent Voice Guide

- Voice guide system speaks real-time information including selected target volume, collection start, collection end and alarm conditions.
- 10 selectable languages:
  - English, Spanish, French, German, Portuguese, Italian, Russian, Chinese, Korean and Japanese



## ■ 5-inch LCD Screen

- Clear backlit LCD display helps users following instructions and monitoring data. Display contains all necessary information for user convenience.



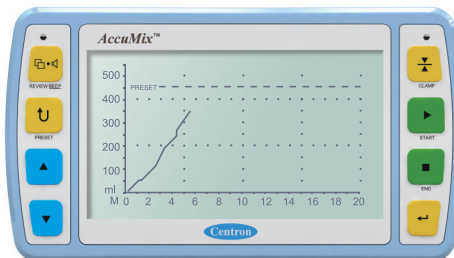
## ■ User-friendly Interface

- Collection processes are represented with graphic symbols.
- Users can change settings depending upon requirements with passwords.



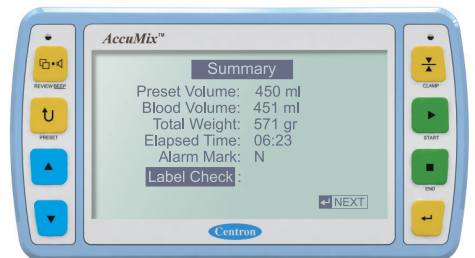
During Collection

- Collected blood volume
- Target blood volume
- Total weight
- Collection elapsed time
- Blood flow rate and alarm
- Collection progress bar



Collected volume curve

- presents collected blood volume vs elapsed time
- Curve slope gives a quick view of collection flow rate

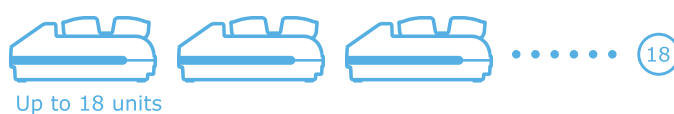


Data summary and review

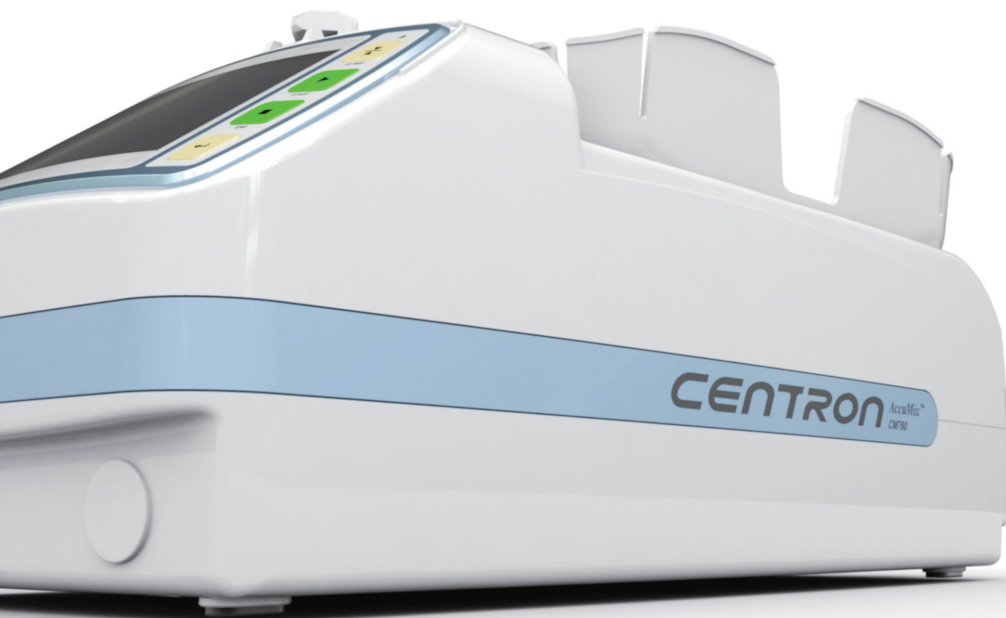
- shows donor data summary at the end of collection cycle
- scrolls all data saved in the internal device memory

## ■ Smart Data Management System

- All the collection data including up to 1,000 donor information are saved in the internal device memory of CM760 main unit. Each data consists of 30 information fields.
- Data can be transferred by a USB memory stick or via wireless data link (CDM).
- One CDM network can group 18 units. A supervisor can monitor and control real-time operation of up to 18 units. Donor data, collection data, alarm status, device settings are real-time managed by a computer.
- Data format is available in .txt (text file) and .csv (general spreadsheet file). Users can manage data with a spreadsheet program. Microsoft Excel® is recommended.
- Device settings in the network can be managed as all or separately.



No.	Serial No.	Device ID	Status	Preset	Collected	Progress	Time
1	[P00100001]	G760ICM001	Collecting	400 ml	50 ml	11%	01:23
2	[P00100002]	G760ICM002	Collecting	400 ml	202 ml	51%	06:30
3	[P00100003]	G760ICM003	Low Flow	400 ml	254 ml	50%	03:42
4	[P00100004]	G760ICM004	Collecting	400 ml	254 ml	50%	03:42
5	[P00100005]	G760ICM005	Ready				
6	[P00100006]	G760ICM006	Ready				
7	[P00100007]	G760ICM007	End	400 ml	400 ml	100%	08:46
8	[P00100008]	G760ICM008	Ready				
9	[P00100009]	G760ICM009	High Flow	400 ml	300 ml	66%	07:05
10	[P00100010]	G760ICM010	Ready				
11	[P00100011]	G760ICM011	11 Pass	400 ml	400 ml	93%	10:02
12	[P00100012]	G760ICM012	Ready				
13							
14							
15							
16							
17							
18							



# CENTRON

## AccuMix™ CM760

DATA COLLECTION MIXER

### Optional Chart

	Selective Item	Including	Note
Unit Configuration	• <b>CM760 Basic</b>	<ul style="list-style-type: none"> <li>• CM760 main unit</li> <li>• AC power adapter</li> <li>• User's manual</li> </ul>	<ul style="list-style-type: none"> <li>• Essential configuration for BASIC MODE operation ONLY</li> <li>• BN128 battery pack is not included</li> </ul>
	• <b>CM760 Standard</b>	<ul style="list-style-type: none"> <li>• CM760 Basic</li> <li>• [Option D] included</li> <li>• [Option C] included</li> </ul>	<ul style="list-style-type: none"> <li>• Standard configuration for DATA MODE operation</li> <li>• BN128 battery pack is not included</li> </ul>
	• <b>CM760 Expansion</b>	<ul style="list-style-type: none"> <li>• CM760 Standard</li> <li>• [Option S] included</li> <li>• BN128 battery pack</li> </ul>	<ul style="list-style-type: none"> <li>• Complete configuration with tube sealing feature</li> </ul>
Optional Package	• <b>[Option D]</b> DATA Management Package	<ul style="list-style-type: none"> <li>• Barcode scanner</li> <li>• Multi-functional remote control unit</li> <li>• USB memory stick</li> </ul>	<ul style="list-style-type: none"> <li>• Supports DATA MODE operation</li> <li>• Either [Option C] or Pole Mounting Kit may be required to hang a barcode scanner, multi-functional remote control unit and sealing hand unit</li> </ul>
	• <b>[Option C]</b> Carrying Case Package	<ul style="list-style-type: none"> <li>• Carrying Case Pro (including device mounting platform, pole, hanger &amp; thumb screw, plug extension adapter)</li> </ul>	<ul style="list-style-type: none"> <li>• Stackable and secured storage</li> <li>• Easy transportation of all parts</li> <li>• Main unit charging available with the case closed</li> <li>• It can be used as collection stand for main unit</li> <li>• Pole and hanger are mounted on device mounting platform</li> </ul>
	• <b>[Option S]</b> Tube Sealer Package	<ul style="list-style-type: none"> <li>• Built-in <i>SureSeal™</i> tube sealer module</li> <li>• Sealing hand unit &amp; 1.8m(6ft) cable</li> </ul>	<ul style="list-style-type: none"> <li>• Built-in <i>SureSeal™</i> tube sealer module (SEM 01)</li> <li>• BN128 battery pack must be installed</li> </ul>
Supporting Device	• <b>Collection Data Manager (CDM)</b>	<ul style="list-style-type: none"> <li>• CDM module</li> <li>• Antenna &amp; USB cable</li> <li>• Installation CD</li> </ul>	<ul style="list-style-type: none"> <li>• Wireless Modem with CDM software package</li> <li>• Real-time collection site monitoring for up to 18 units</li> <li>• Wireless data transferring to a computer</li> <li>• Simultaneous device setting for a group of 18 units</li> </ul>
	• <b>BC164 Fast Battery Charger</b>		<ul style="list-style-type: none"> <li>• AC powered fast multi-battery charger</li> <li>• Charging of 6 BN128 battery packs</li> </ul>

\* Optional parts including BN128 battery pack may be sold separately. For more information about package customization, please visit our website.

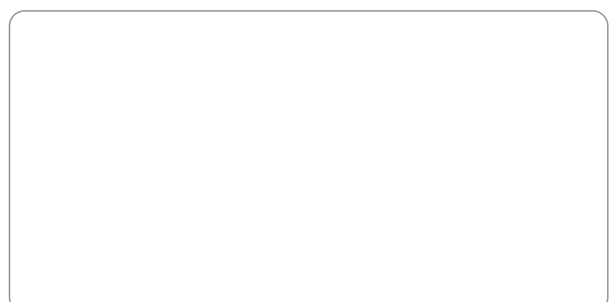
### Specification

Product	Data Collection Mixer
Model	CM760
Power	18V --- 1.67A + ⚡ ---
Adapter	100-240V~ 50/60Hz 0.8A
Dimension	Main Unit: 200(W)mm/400(L)mm/176(H)mm
	Carrying Case: 280(W)mm/450(L)mm/380(H)mm

### Information



### DISTRIBUTOR



### Centron Centron Corporation

**Address:** 44 Beolmal-ro, Dongan-gu, Anyang, Gyeonggi-do, Postal Code 431-804 / Republic of Korea  
**Phone:** +82-31-422-7890 / **Fax:** +82-31-422-7866  
**E-mail:** info@centrons.com  
**Website:** www.centrons.com



\* The specification and design are subject to change without prior notice for product upgrades.